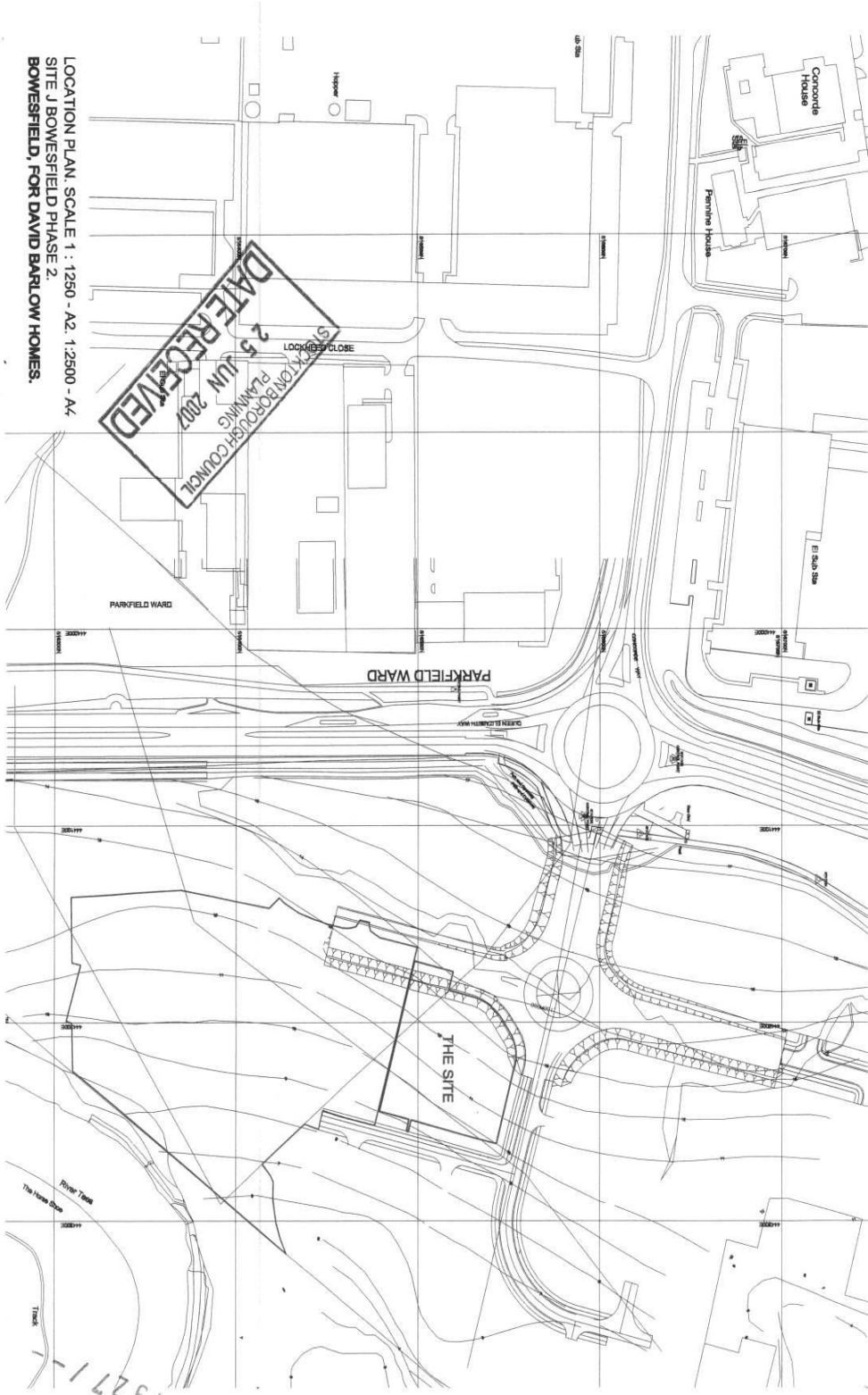


Appendix 1
Site Location Plan
07/1927/FUL



LOCATION PLAN, SCALE 1 : 1250 - A2, 1:2500 - A4
SITE 1 BOWSFIELD PHASE 2,
BOWSFIELD, FOR DAVID BARLOW HOMES.

SBC 0007 07 / 1927 / -

**Appendix 2
Proposed Site Plan
07/1927/FUL**



05358 MacWilliam Drive
Auckland
6/19 dweller's/revise
Mc 3/07/07
20m Type A flats
12m Type B flats
4m Nordic Houses

**Bowesfield Phase 2
for David Barlow Homes**

Proposed Development
1:500 @ A3
19/01/07
731/004 Rev E

Rev B 01/05/07: Dimension from apartments to boulevard trees increased to 5.5m; parking layout and reserved garden adjusted to suit reference to elevations. 4/1/07
Rev D 18/06/07: red lined application boundary repositioned to edge of site including boulevard access to rear garden. 20/07/07
Rev E 18/10/07: parking court amended for dis. access to rear garden. 20/07/07
Revised site plan showing reserved garden and parking spaces for revised drawing.

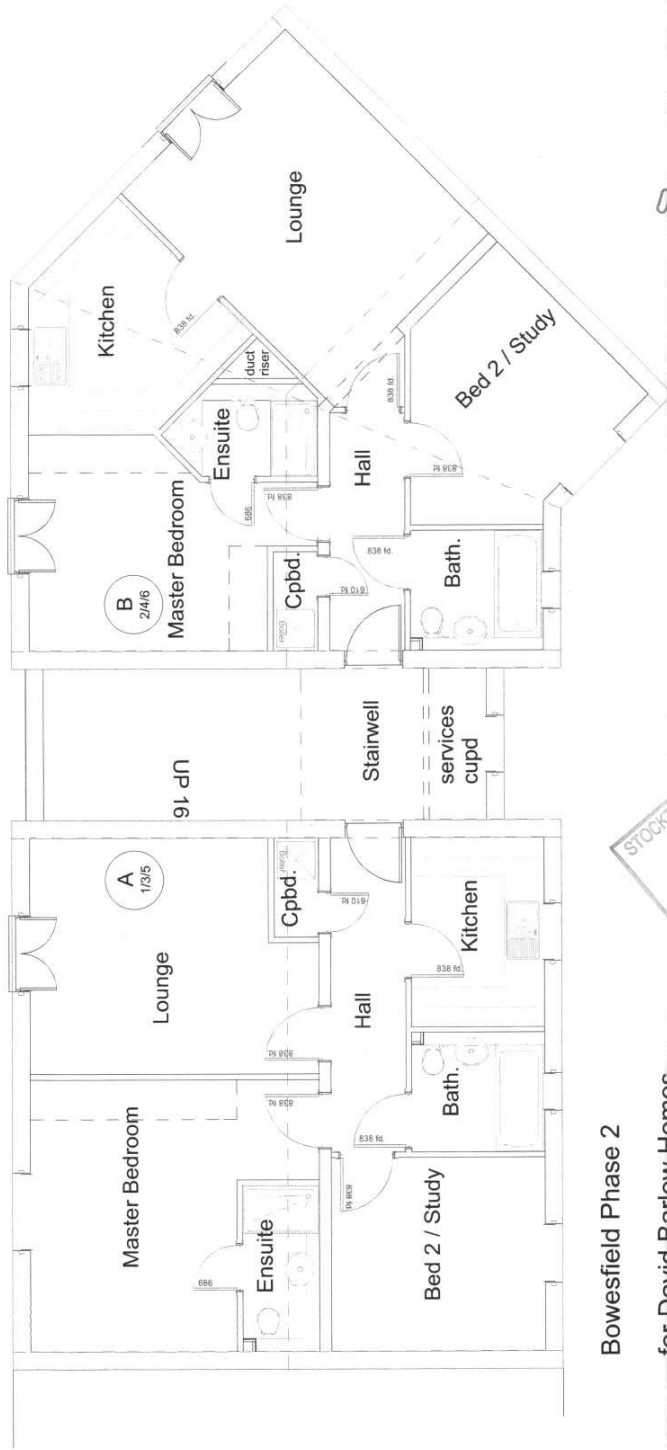
STOCKTON BOROUGH COUNCIL
18 OCT 2007
PLANNING
DATE RECEIVED

Appendix 3 Apartment Elevations 07/1927/FUL



DATE RECEIVED
01 MAY 2007
STOCKTON BOROUGH COUNCIL
PLANNING

**Appendix 4
Apartment Floor Plan
07/1927/FUL**



SBC 0000

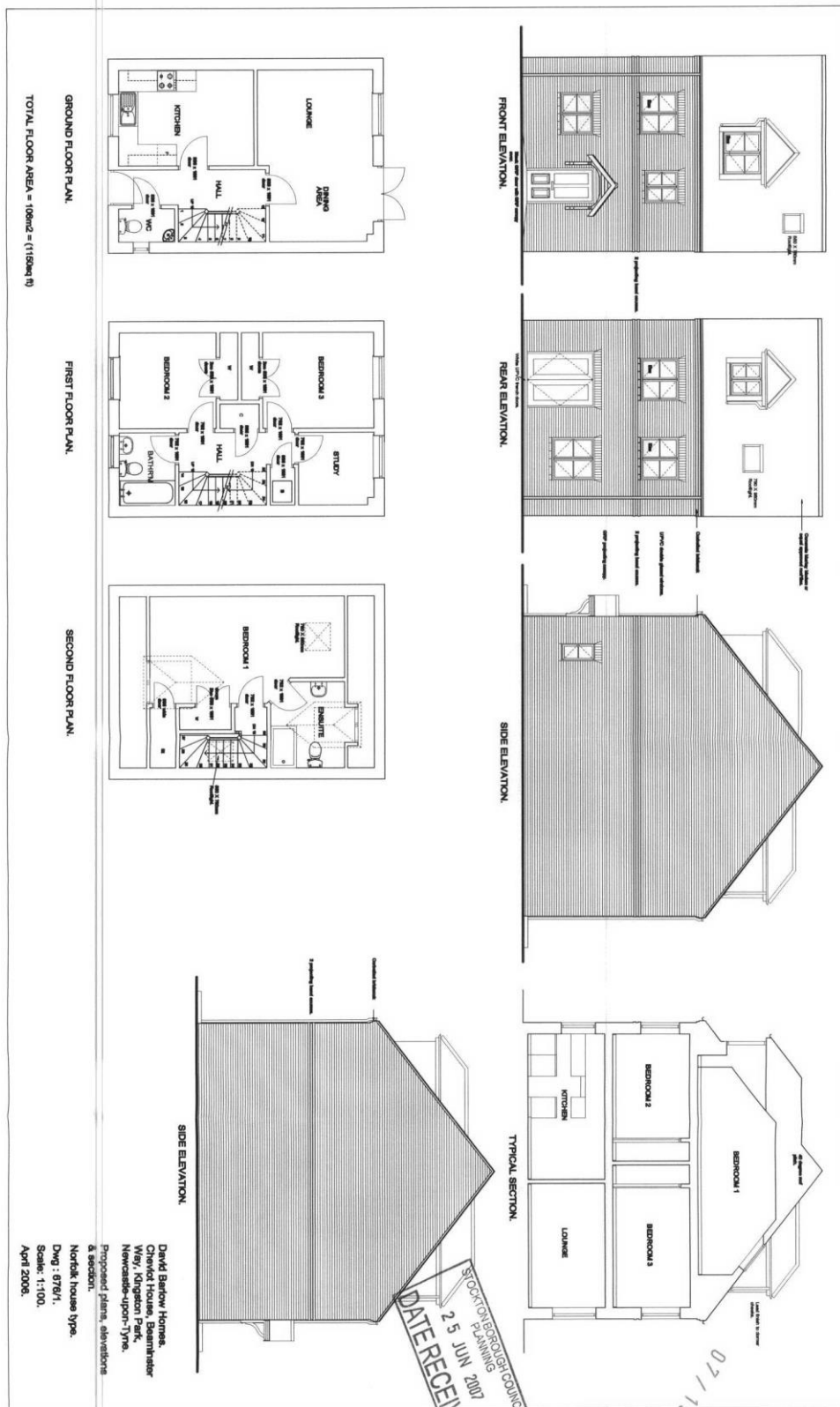
07 / 1927 / - -



Bowesfield Phase 2
for David Barlow Homes

Proposed generic flat plan
TypeA 65.8sqm: TypeB 65.9sqm
1:100
17.01.07
SK004

Proposed House Type
07/1927/FUL



GROUND FLOOR PLAN.
TOTAL FLOOR AREA = 109m² = (1159sq ft)

FIRST FLOOR PLAN.

SECOND FLOOR PLAN.

SBC 0001

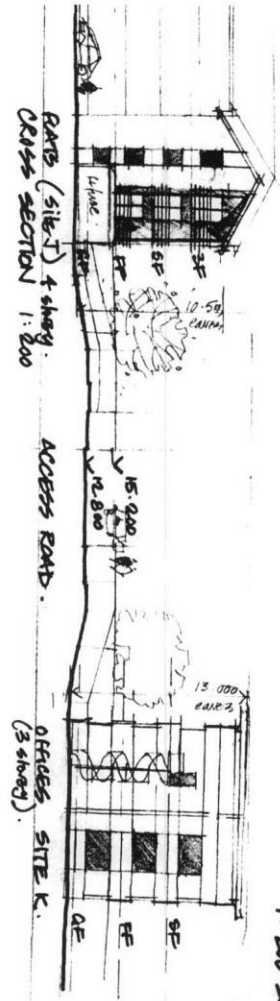
David Barlow Homes,
Cherold House, Beamster
Way, Kingsdon Park,
Newcastle-upon-Tyne.
Proposed plans, elevations
& section.
North house type.
Dwg: 07/01.
Scale: 1:100.
April 2006.

STOCKTON-ON-THE-WATER COUNCIL
PLANNING
25 JUN 2007
DATE RECEIVED

07/1927/-

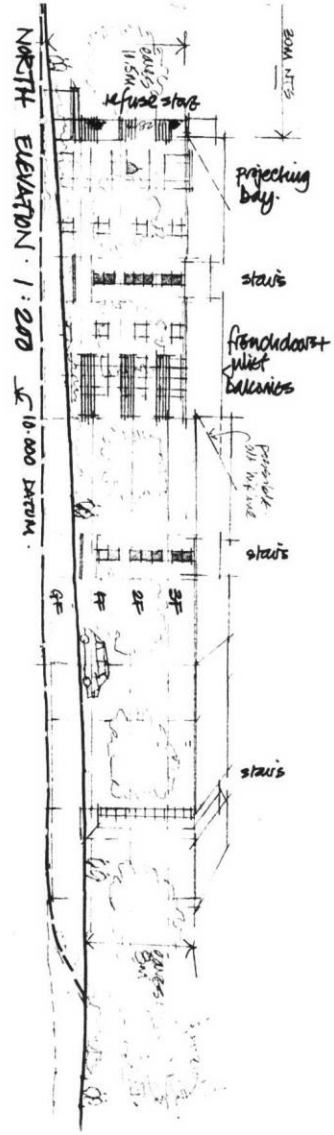
1/ SK 006
3 2007

David Ballou draws
Site J
Bonesfield 2
1:200 sections/lev.



SBC 0006

07/1927/---



STOCKTON REGIONAL COUNCIL
PLANNING
25 JUN 2007
DATE RECEIVED